



CAN I/O & CAN PLC

**The compact automotive suited CAN I/O & CAN PLC module serves for the extension of existing CAN controllers
Free graphically programmability allows multiple uses in automotive applications**

also as Input-/Output extension usable
9 - 30 VDC

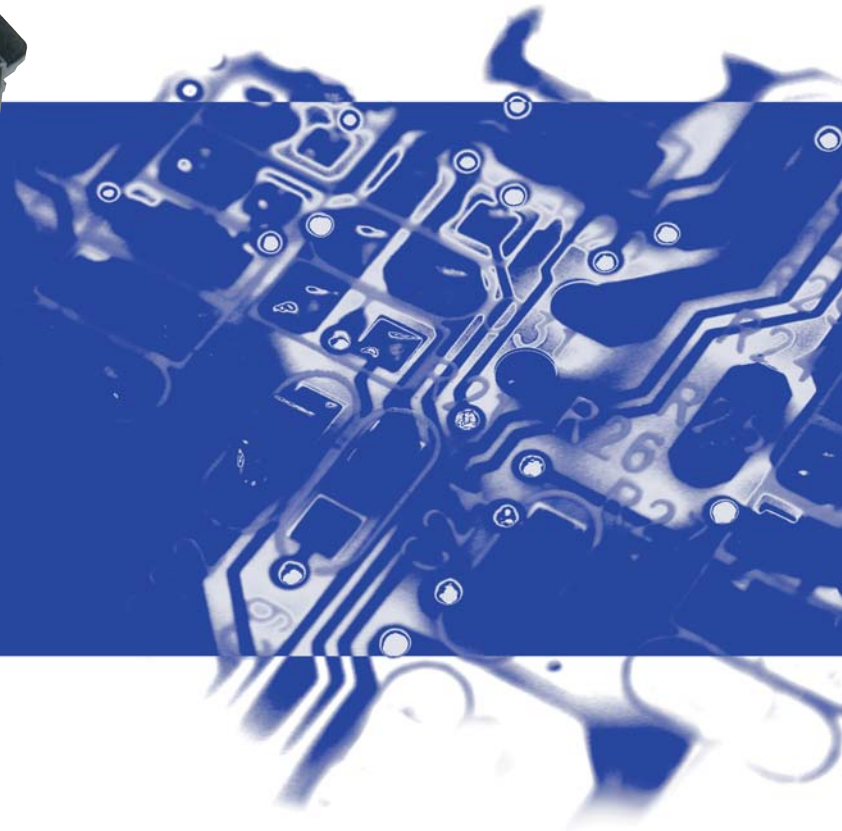
6 digitale outputs- and/or analogue inputs
2 digitale outputs- and/or digital Inputs

6 analogue inputs additionally

CAN high-/low speed or RS485

CANopen- and SAE J1939 able

compact 60 x 60 x 30 mm



Product information:

CAN I/O & CAN PLC

- The compact automotive suited "CAN I/O & CAN PLC Module" serves for the extension of existing CAN-Controllers, but it can also be used as stand alone controller
- Graphically programming (FUP) with the programming tool *MRS Developers Studio*®
- The module is via CAN bus programmable (CAN Bootloader)
- For the data exchange with other systems three different buses can be used: CAN high speed at ISO 11898-2 or CAN low speed at ISO 11898-3/ISO 1598 (fault-tolerant CAN) or RS485
- 6 digitale Outputs and/or analogue Inputs (programmable), 2 digitale Outputs and/or digitale Inputs (programmable) and 6 analogue Inputs additionally
- Power High-Side-Driver 2,5 A each Output at $t_{um} < 80^{\circ}C$, but max. 10 A per HighSideDriver
- Freescale HCS08 Processor with flash-technology (Option to write many times)
- By using of a powerful processor the module is CANopen- and SAE J1939 able
- Working temperature: $-40^{\circ}C$ to $85^{\circ}C$ (at $85^{\circ}C$ no full load)
- compact Housing dimensions (60 x 60 x 30 mm), connector (22-pol Molex Mini Fit Junior)
- e1 approval number: 03 5385



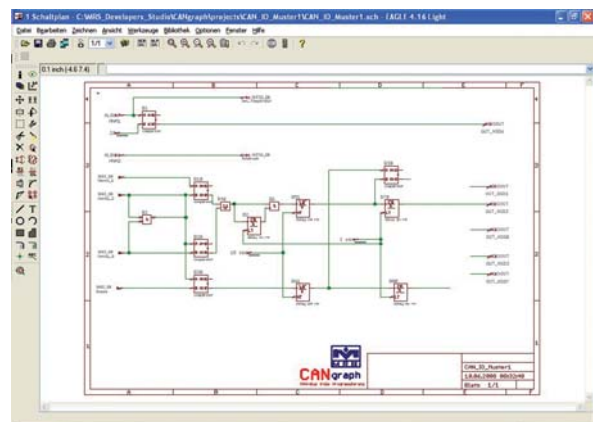
Application examples:

- independent PLC controller
- output expansion, e.g. in comfort tourist busses
- control of operating unit
- inquiry of sensors

Simple graphically programming of the MRS-Products with *MRS Developers Studio*® and *CANgraph*®

Programmable with the *Developers Studio*® are the MRS-Products

- CAN I/O & CAN PLC
- μ SPS CAN
- PROP CAN
- CAN AAG
- more products will follow



An innovatives company –
dedicated to progress

MRS Electronic GmbH
Klaus-Gutsch-Straße 7
78628 Rottweil
Fon: +49 (0)741 / 28 07-0
Fax: +49 (0)741 / 28 07-44
info@mrs-electronic.de
www.mrs-electronic.de

