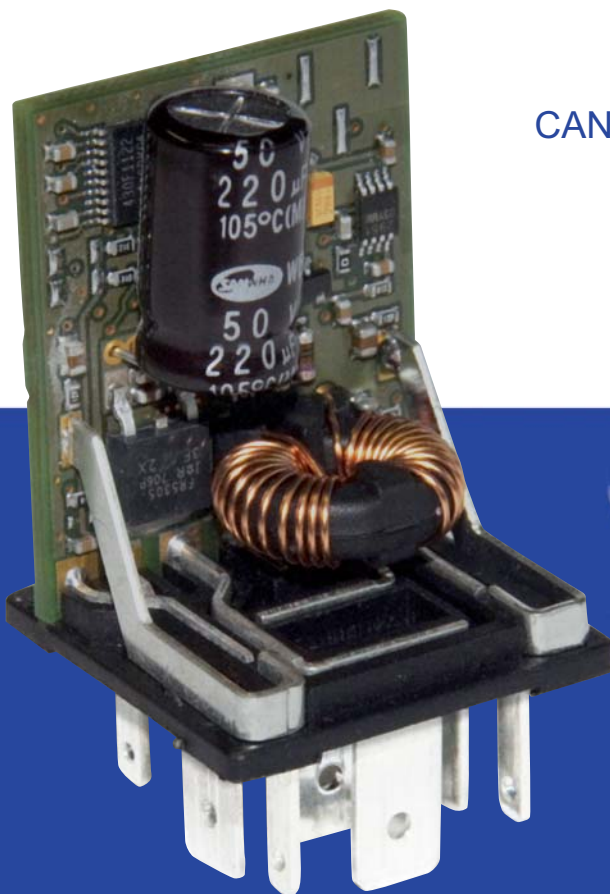




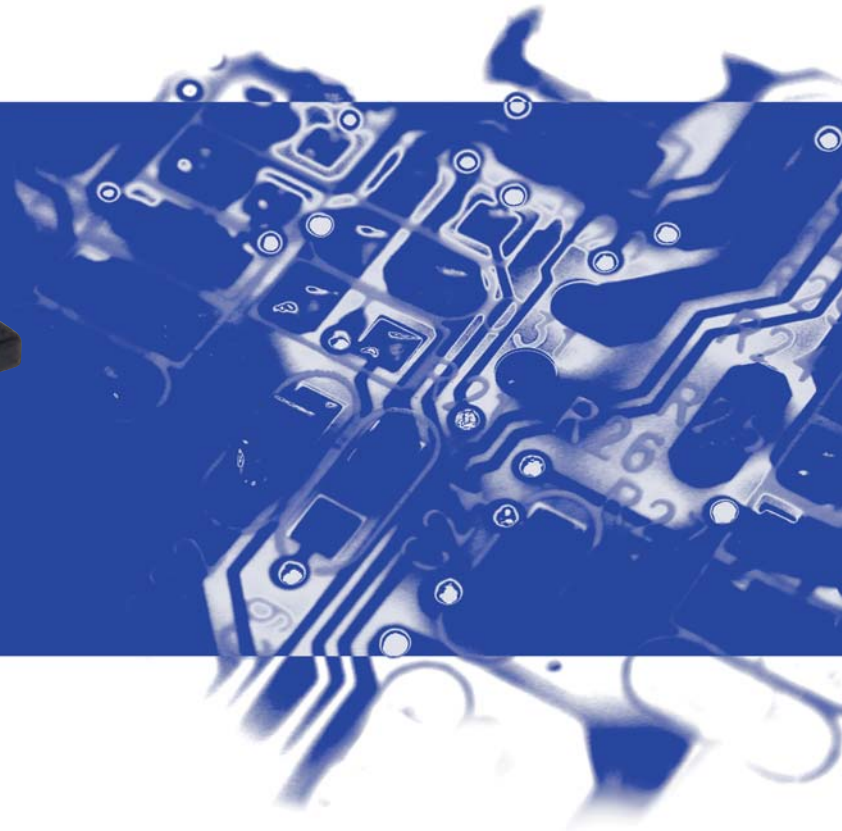
PROP CAN

Proportional amplifier with CAN Bus

The economical and automotive suited proportional amplifier serves for the flow rate regulation of proportional valves. By the use of a Microcontroller the current controls and Ditherfrequency parameter can be adjusted freely.



9 - 30 VDC
2 analogue Inputs
CAN High Speed, SAEJ1939, CANopen able
1 PWM Output with 3 A
Current control
compact housing 40 x 30 x 30 mm



Product information:

PROP CAN Proportional amplifier with CAN Bus

- CAN High Speed; SAEJ1939, CANopen able
- Serves for the flow rate regulation of a proportional valve
- Micro Controller-steered system, i.e. all parameters how e.g. min./ max. current and Ditherfrequency can be adjust
- Desired value as voltage or current signal
- Current regulated system, fluctuations in supply voltage and the coil resistance are thus compensated
- In order to receive a higher resolution, an adjustable Ditherfrequency can be overlaid
- When using another rule algorithm is the Control of a DC motor possible e.g. exhaust rpm
- small housing: 40 x 30 x 30 mm
picture without housing



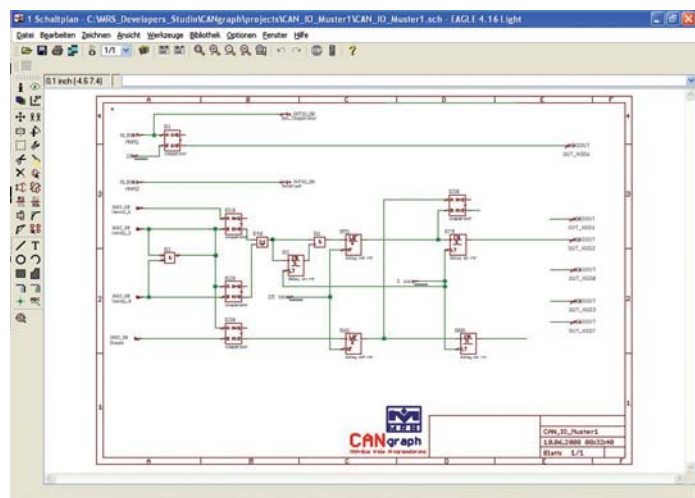
Approval examples:

- Construction machines
- Agricultural machinery
- Industrie/equipment construction
- Public utilities vehicles
- Special vehicles
- Mechanical engineering

Simple graphic programming of the MRS products with the *MRS Developers Studio*® and *CANgraph*®

Programmable with the *Developers Studio*® are the MRS-Products

- PROP CAN
- μ SPS CAN
- CAN I/O & CAN SPS
- CAN AAG
- Further products will follow



A innovative company –
dedicated to progress

MRS Electronic GmbH
Klaus-Gutsch-Straße 7
D - 78628 Rottweil
Fon: +49 (0)741 / 28 07-0
Fax: +49 (0)741 / 28 07-44
info@mrs-electronic.de
www.mrs-electronic.de

